

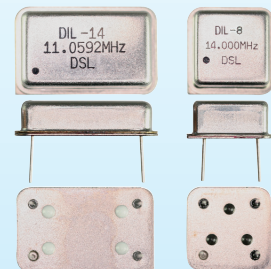
PRODUKT-INFO

DIL-14 TSW • DIL-8 TSW TRUE SINE WAVE CLOCK OSCILLATOR

FEATURES

1. True sine wave clock oscillator with size of 20.2 x 12.8 x 5.08 mm & 12.8 x 12.8 x 5.5 mm
2. 2.8V, 3.3V or 5.0V supply voltage.

Actual Size



ELECTRICAL SPECIFICATIONS		
Model	Condition	DIL-14 TSW / DIL-8 TSW
Frequency Range		10.0 – 30.0 MHz
Frequency Tolerance	at +25°C	±25 / ±50 / ±100 ppm max.
Frequency Stability	-10°C to +70°C -40°C to +85°C	enter the desired stability after the code „C“ enter the desired stability after the code „I“*
Operating Temperature Range		-10°C to +70°C commercial -40°C to +85°C industrial
Storage Temperature Range		-55°C to +125°C
Power Supply Voltage		2.8 V _{DC} ±5% / +3.3 V _{DC} ±5% / +5.0 V _{DC} ±10%;
Current Consumption at 15 pF Load		1.0 mA max. / 1.5 mA max. / 1.2 mA max.
Start Time		2.0 ms typical
Load		45KΩ // 10 pF load
Output Level		1.0 V _{p-p} typical
Harmonics		< -25dBc (frequency dependent) ***
Aging	at +25°C	±5 ppm / year max.

Terminal DIL-14 TSW	Terminal DIL-8 TSW	Connection
#1**	#1**	N.C.
#7	#4	GND
#8	#5	OUTPUT
#14	#8	V _{DD}

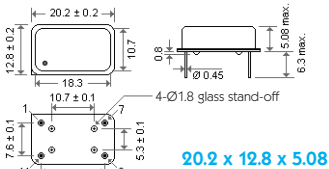
■ **General specification:** at Ta=25°C, CL=15pF
* for example: „C20“ for ±20 ppm over commercial temperature range;
„I30“ for ±30 ppm over industrial temperature range.

** No Tri-state option.

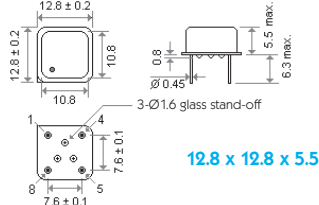
*** Sub-Harmonics: none.

Dimensions (Units: mm)

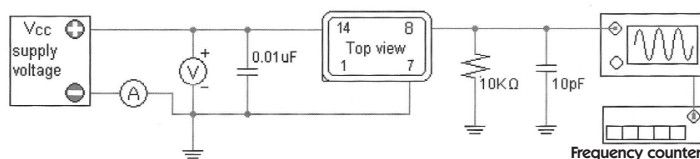
DIL-14 TSW



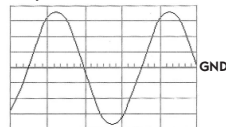
DIL-8 TSW



10 KΩ // 10 pF Load Test Circuit



DIL-14 TSW & DIL-8 TSW Output Wave Form



*Crystals...
and more*

Now available

RoHS
COMPLIANT
2002/95/EC

**digital electronic
siegfried lehrer gmbh**
Rudolf-Wanzl-Str. 3+5
D-89340 Leipheim / Germany
www.digitallehrer.de
digital@digitallehrer.de

Telefon +49 (0) 82 21 / 7 08 - 0 • Telefax +49 (0) 82 21 / 7 08 - 80

All specifications subject to change without notice.