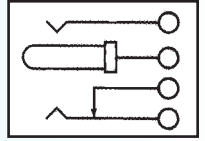
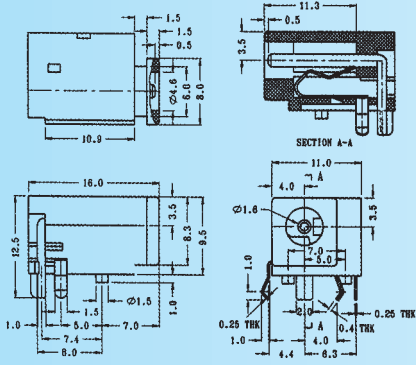


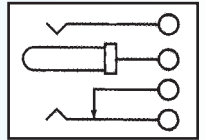
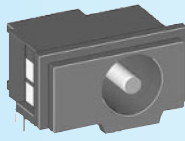
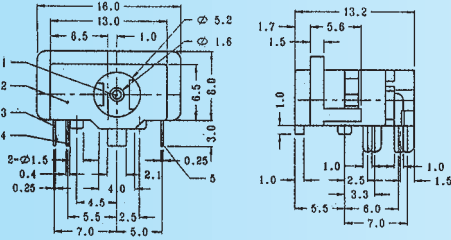
DS-414

Rating: 0.3A 30V DC



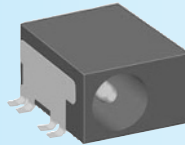
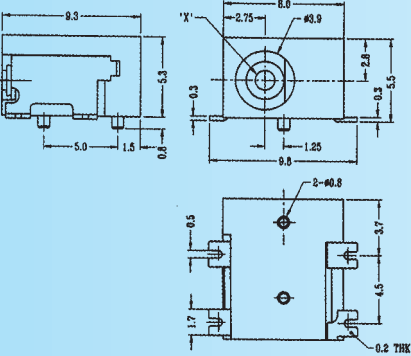
DS-415

Rating: 0.3A 30V DC

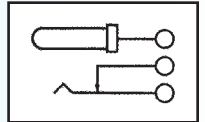


DS-420 SERIES

Rating: 0.3A 30V DC

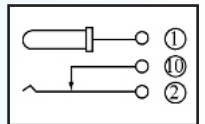
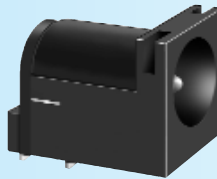
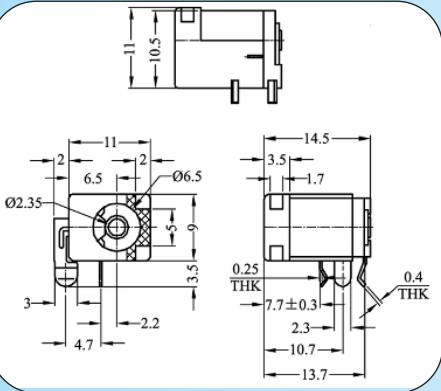


DIA.OF PIN`X` E=1.0 mm
DIA.OF PIN`X` D=1.3 mm



DS-248

Rating: 0.3A 30V DC



DS-423 SERIES

Rating: 0.3A 30V DC
Function: MONO

