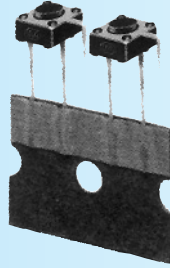
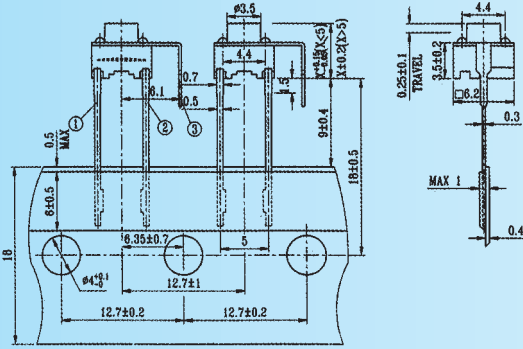
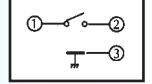


TC-0312 series



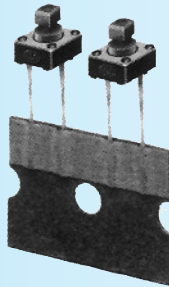
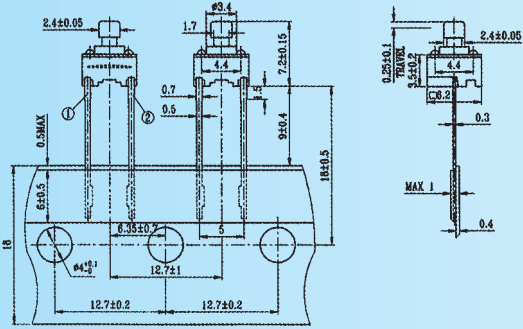
| MODEL | Stem length, mm | CODE | Operating Force, gf |
|---------|-----------------|------|---------------------|
| TC-0312 | 3.15 | T | 100±30 |
| TC-0313 | 3.85 | V | 130±30 |
| TC-0314 | 5.85 | X | 160±50 |
| TC-0315 | 8.35 | W | 170±50 |
| TC-0316 | 6.85 | Y | 190±50 |
| TC-0318 | 11.35 | Z | 250±100 |
| TC-0319 | 6.15 | | |

CIRCUIT DIAGRAM



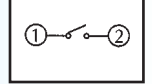
1. RATING: DC 12V 50mA
2. TRAVEL: 0.25 ± 0.1 mm
3. CONTACT RESISTANCE 100mΩ MAX

TC-0324 series



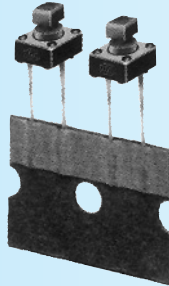
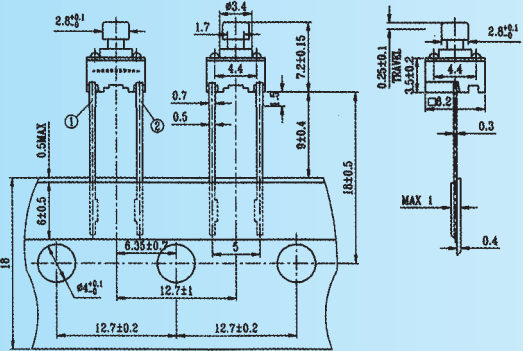
| CODE | Operating Force, gf |
|------|---------------------|
| T | 100±30 |
| V | 130±30 |
| X | 160±50 |
| W | 170±50 |
| Y | 190±50 |
| Z | 250±100 |

CIRCUIT DIAGRAM



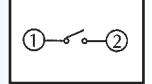
1. RATING: DC 12V 50mA
2. TRAVEL: 0.25 ± 0.1 mm
3. CONTACT RESISTANCE 100mΩ MAX
4. STEM LENGTH 2.4 x 2.4 mm

TC-0328 series



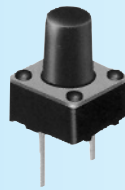
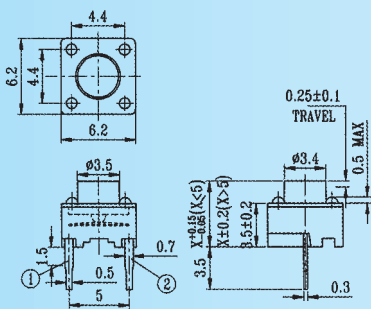
| CODE | Operating Force, gf |
|------|---------------------|
| T | 100±30 |
| V | 130±30 |
| X | 160±50 |
| W | 170±50 |
| Y | 190±50 |
| Z | 250±100 |

CIRCUIT DIAGRAM



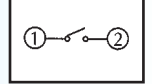
1. RATING: DC 12V 50mA
2. TRAVEL: 0.25 ± 0.1 mm
3. CONTACT RESISTANCE 100mΩ MAX
4. STEM LENGTH 2.8 x 2.8 mm

TC-0402 series



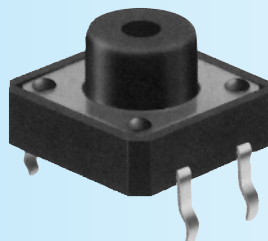
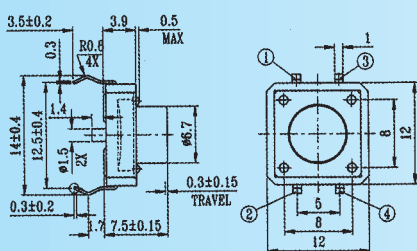
| MODEL | Stem length, mm | CODE | Operating Force, gf |
|---------|-----------------|------|---------------------|
| TC-0402 | 4.3 | T | 100±30 |
| TC-0403 | 5 | V | 130±30 |
| TC-0404 | 7 | X | 160±50 |
| TC-0405 | 7.3 | W | 170±50 |
| TC-0406 | 8 | Y | 190±50 |
| TC-0407 | 8.5 | Z | 250±100 |
| TC-0408 | 9.5 | | |
| TC-0409 | 12.5 | | |

CIRCUIT DIAGRAM



1. RATING: DC 12V 50mA
2. TRAVEL: 0.25 ± 0.1 mm
3. CONTACT RESISTANCE 100mΩ MAX

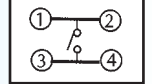
TC-12EA series



| MODEL | GUIDE PIN | CODE | Operating Force, gf |
|---------|-----------|------|---------------------|
| TC-12EA | With | X | 160±50 |
| TC-12XA | Without | Z | 250±100 |

| COVER TYPE | CODE |
|------------|------|
| PLASTIC | A01 |
| METAL | A00 |

CIRCUIT DIAGRAM



1. RATING: DC 12V 50mA
2. TRAVEL: 0.3 ± 0.15 mm
3. CONTACT RESISTANCE 100mΩ MAX